

NELSON ANALYTICAL LAB

120 York Street
 Kennebunk, ME 04046
 (207) 467-3478

ISO 17025:2017 Certification
 ANAB Certificate Number AT-2169
 Maine CDC Accreditation # MTF001
 Office of Marijuana Policy MTF328

Amount Received:

REPORT OF ANALYSIS

Date sampled : 10/31/2023

Collected by: Client

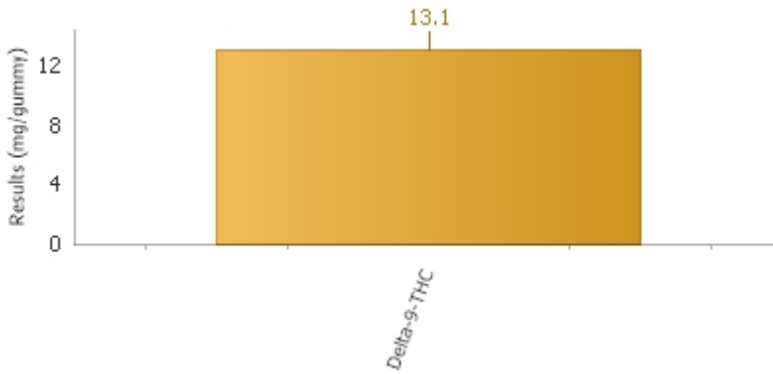
Littlefield Confections

Reported Date: 11/01/2023

C23100853.05

Temp Received:

Blue Razz Dweeb(Edible)



Cannabinoids by HPLC

| Analyte | Result | Reporting Limit | Units | Q | Analyzed | Method | Analyst | Pass/Fail Limit | Test Remarks |
|-----------------------------|-------------|-----------------|----------|---|------------------|------------|---------|-----------------|--------------|
| Cannabidiol (CBD) | ND | 0.5 | mg/gummy | | 10/31/2023 20:37 | HPLC SOP-7 | NRS | N/A | |
| Cannabidiolic acid (CBDA) | ND | 0.5 | mg/gummy | | 10/31/2023 20:37 | HPLC SOP-7 | NRS | N/A | |
| Cannabigerolic acid (CBGA) | ND | 0.5 | mg/gummy | | 10/31/2023 20:37 | HPLC SOP-7 | NRS | N/A | |
| Cannabigerol (CBG) | ND | 0.5 | mg/gummy | | 10/31/2023 20:37 | HPLC SOP-7 | NRS | N/A | |
| Cannabidiol (CBD) | ND | 0.5 | mg/gummy | | 10/31/2023 20:37 | HPLC SOP-7 | NRS | N/A | |
| Tetrahydrocannabinol (THCV) | ND | 0.5 | mg/gummy | | 10/31/2023 20:37 | HPLC SOP-7 | NRS | N/A | |
| Cannabinol (CBN) | ND | 0.5 | mg/gummy | | 10/31/2023 20:37 | HPLC SOP-7 | NRS | N/A | |
| Delta-9-THC | 13.1 | 0.5 | mg/gummy | | 10/31/2023 20:37 | HPLC SOP-7 | NRS | N/A | |
| Delta-8-THC | ND | 0.5 | mg/gummy | | 10/31/2023 20:37 | HPLC SOP-7 | NRS | N/A | |
| Cannabichromene (CBC) | ND | 0.5 | mg/gummy | | 10/31/2023 20:37 | HPLC SOP-7 | NRS | N/A | |
| THCA-A | ND | 0.5 | mg/gummy | | 10/31/2023 20:37 | HPLC SOP-7 | NRS | N/A | |

Total Cannabinoids by HPLC (Calculated)

| Analyte | Result | Reporting Limit | Units | Q | Analyzed | Method | Analyst | Pass/Fail Limit | Test Remarks |
|-----------------------------------|-------------|-----------------|----------|---|------------------|------------|---------|-----------------|--------------|
| CBD+CBDA- Calculated | ND | 0.5 | mg/gummy | | 10/31/2023 20:37 | HPLC SOP-7 | NRS | N/A | |
| Total CBD-(Max CBD) Calculated | ND | 0.5 | mg/gummy | | 10/31/2023 20:37 | HPLC SOP-7 | NRS | N/A | |
| THC+THCA- Calculated | 13.1 | 0.5 | mg/gummy | | 10/31/2023 20:37 | HPLC SOP-7 | NRS | N/A | |
| Total THC-(Max THC) Calculated | 13.1 | 0.5 | mg/gummy | | 10/31/2023 20:37 | HPLC SOP-7 | NRS | N/A | |
| Total THC-(Max THC+D8) Calculated | 13.1 | 0.5 | mg/gummy | | 10/31/2023 20:37 | HPLC SOP-7 | NRS | N/A | |
| Total Cannabinoids- Calculated | 13.1 | 0.5 | mg/gummy | | 10/31/2023 20:37 | HPLC SOP-7 | NRS | N/A | |
| Weight of edible submitted | 5.23 | | g | | 10/31/2023 20:37 | HPLC SOP-7 | NRS | N/A | |

Results as reported above relate only to samples as submitted, unless specifically noted otherwise.